

Design by  
**SUZANNE ATKINSON**

# Curvy Cabled Scarf

THE SCARF UNDULATES WITH THE  
 CURVES OF THE CABLES.

**Skill Level**  INTERMEDIATE

**Finished Size**  
 Approx 5 x 62 inches

## Materials

- Bulky weight yarn\* (123 yds/100g per ball): 2 balls purple #13
- Size 10 (6mm) needles or size needed to obtain gauge
- Cable needle



\*Sample project was completed with Galway Chunky (100 percent wool) from Plymouth Yarn Co.

## Gauge

30 sts = 5 inches/12.5cm; 24 rows = 4¾ inches in Cable Pat.  
 Exact gauge is not critical to this project.

## Special Abbreviations

**Twist 3 Back (T3B):** Sl next st to cn, hold in back, k2, p1 from cn.

**Twist 3 Front (T3F):** Sl next 2 sts to cn, hold in front, p1, k2 from cn.

**Cable 4 Back (C4B):** Sl next 2 sts to cn, hold in back, k2, k2 from cn.

**Cable 4 Front (C4F):** Sl next 2 sts to cn, hold in front, k2, k2 from cn.

**Increase (inc):** Inc 1 st by knitting in front and back of next st.

## Pattern Stitch

### Cable Pattern

**Row 1 (RS):** Sl 1, p1, [T3B, T3F] 3 times, p1, k1.

**Row 2:** Sl 1, inc, p2, [k2, p4] twice, k2, p2, inc, k1—24 sts.

**Row 3:** Sl 1, p1, T3B, [p2, C4B] twice, p2, T3F, p1, k1.

**Row 4:** Sl 1, inc, p2, k3, p4, k2, p4, k3, p2, inc, k1—26 sts.

**Row 5:** Sl 1, p1, T3B, p2, [T3B, T3F] twice, p2, T3F, p1, k1.

**Row 6:** Sl 1, inc, p2, k3, p2, k2, p4, k2, p2, k3, p2, inc 1, k1—28 sts.

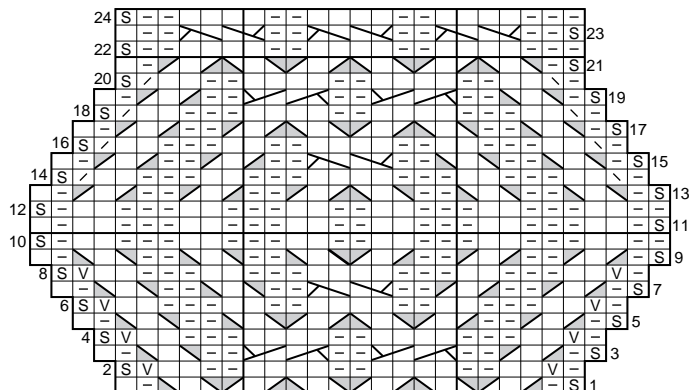
**Row 7:** Sl 1, p1, [T3B, p2] twice, C4F, [p2, T3F] twice, p1, k1.

**Row 8:** Sl 1, inc, [p2, k3] twice, p4, [k3, p2] twice, inc, k1—30 sts.

**Row 9:** Sl 1, p1, [T3B, p2] twice, T3B, [T3F, p2] twice, T3F, p1, k1.

### STITCH KEY

	K on RS, p on WS
	P on RS, k on WS
	Sl 1
	Inc 1
	Ssk
	K2tog
	T3B
	T3F
	C4B
	C4F



CABLE CHART

**Row 10:** Sl 1, k1, [p2, k3] twice, p2, k2, [p2, k3] twice, p2, k2.

**Row 11:** Sl 1, p1, [k2, p3] twice, k2, p2, [k2, p3] twice, k2, p1, k1.

**Row 12:** Sl 1, k1, [p2, k3] twice, p2, k2, [p2, k3] twice, p2, k2.

**Row 13:** Sl 1, p1, [T3F, p2] twice, T3F, [T3B, p2] twice, T3B, p1, k1.

**Row 14:** Sl 1, ssk, [p2, k3] twice, p4, [k3, p2] twice, k2tog, k1—28 sts.

**Row 15:** Sl 1, p1, [T3F, p2] twice, C4F, [p2, T3B] twice, p1, k1.

**Row 16:** Sl 1, ssk, p2, k3, p2, k2, p4, k2, p2, k3, p2, k2tog, k1—26 sts.

**Row 17:** Sl 1, p1, T3F, p2, [T3F, T3B] twice, p2, T3B, p1, k1.

**Row 18:** Sl 1, ssk, p2, k3, p4, k2, p4, k3, p2, k2tog, k1—24 sts.

**Row 19:** Sl 1, p1, T3F, [p2, C4B] twice, p2, T3B, p1, k1.

**Row 20:** Sl 1, ssk, p2, [k2, p4] twice, k2, p2, k2tog, k1—22 sts.

**Row 21:** Sl 1, p1, [T3F, T3B] 3 times, p1, k1.

**Row 22:** Sl 1, k2, [p4, k2] twice, p4, k3.

**Row 23:** Sl 1, [p2, C4F] 3 times, p2, k1.

**Row 24:** Sl 1, [k2, p4] 3 times, k3.

Rep Rows 1–24 for Cable pat.

## Pattern Notes

Sl first st of every row purlwise wyif.

Outer edges of scarf are shaped with inc and dec. St count varies: Cable beg on 22 sts, inc on WS rows to 30 sts, then dec on WS rows back to 22 sts.

## Scarf

Cast on 22 sts.

**Set-up row (WS):** Work Row 24 of Cable Pat.

Work [Rows 1–24 from Cable Chart] 12 times, then rep [Rows 1–21] once more.

Bind off in pat on Row 22, dec 3 sts evenly across row while binding off.

Block to measurements. ■

