

Pumpkin Spice

Skill Level 
EASY

Finished Size

13 x 13¾ (17 x 17¾) inches, without pillow form. Instructions are given for smaller size, with larger size in parentheses. When only 1 number is given, it applies to both sizes.

Materials

- Worsted weight yarn* (220 yds/100g per skein): 4 (5) skeins brown heather #2453
- **Note:** Yarn amount is sufficient for 2 pillows of the same size.
- Size 8 (5mm) needles or size needed to obtain gauge
- Stitch markers
- Size H-8 (5mm) crochet hook
- 16- (20-) inch pillow form (for sample pillows, pillow forms were covered with fabric to match yarn)



*Sample projects were completed with 220 Wool Heathers (100% Peruvian Highland wool) from Cascade Yarns.

Gauge

19 sts and 22 rows = 4 inches/
10cm in Lacy Leaf pat.
18 sts and 34 rows = 4 inches/
10cm in garter st.
To save time, take time to
check gauge.

Special Abbreviation

Knit in front, back and front

(kfbf): Knit in front and back and front again of next st to inc 2 sts.

Pattern Stitch

Lacy Leaf (multiple of
16 sts + 1)

Give your living room a quick autumn pick-me-up with this easy and portable project.

Note: Stitch count increases from 16 to 24 sts, then decreases down to 14 sts, returning to original count on Row 21.

Row 1 (RS): Knit across.

Row 2: P1, *k6, p3, k6, p1; rep from * across.

Row 3: *K8, yo, k1, yo, k7; rep from * to last st, end k1.

Row 4: P1, *k6, p5, k6, p1; rep from * across.

Row 5: *K9, yo, k1, yo, k8; rep from * to last st, end k1.

Row 6: P1, *k6, p7, k6, p1; rep from * across.

Row 7: *K10, yo, k1, yo, k9; rep from * to last st, end k1.

Row 8: P1, *k6, p9, k6, p1; rep from * across.

Row 9: *K11, yo, k1, yo, k10; rep from * to last st, end k1.

Row 10: P1, *k6, p11, k6, p1; rep from * across.

Row 11: *K7, ssk, k7, k2tog, k6; rep from * to last st, end k1.

Row 12: P1, *k6, p9, k6, p1; rep from * across.

Row 13: *K7, ssk, k5, k2tog, k6; rep from * to last st, end k1.

Row 14: P1, *k6, p7, k6, p1; rep from * across.

Row 15: *K7, ssk, k3, k2tog, k6; rep from * to last st, end k1.

Row 16: P1, *k6, p5, k6, p1; rep from * across.

Row 17: *K7, ssk, k1, k2tog, k6; rep from * to last st, end k1.

Row 18: P1, *k6, p3, k6, p1; rep from * across.

Row 19: *K7, k3tog, k6; rep from * to last st, end k1.

Row 20: P1; *k6, p1; rep from * across.

Row 21: *K7, kfbf, k6; rep from * to last st, end k1.

Pattern Notes

Wool yarn is used for these pillows and is very stretchy; therefore, cotton yarn cannot be substituted.

A chart is provided for those preferring to work Lacy Leaf pattern from a chart.

Front

Cast on 61 (79) sts.

Row 1 (RS): K6 (7), place marker, work Row 1 of Lacy Leaf pat to last 6 (7) sts, place marker, k6 (7) sts.

Keeping first and last 6 (7) sts in garter st and sts between marker in Lacy Leaf pat, work [Rows 2–21 of Lacy Leaf pat] 4 (5) times, then work Rows 2–20.

Next row: Knit across.

Bind off loosely.



Back

Cast on 58 (77) sts.

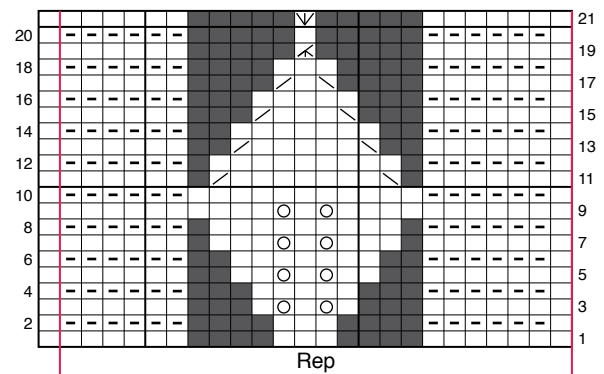
Work in garter st for 114 (152) rows. Bind off loosely.

Finishing

With WS tog, pin 3 sides of front and back tog. Join yarn in 1 corner and, working through both thicknesses, sc front and back of 3 sides tog, placing 3 sc in each corner. Insert a pillow form that has been covered with material of a similar color, then sc rem side closed. ■

STITCH KEY

<input type="checkbox"/>	K on RS, p on WS
<input type="checkbox"/>	P on RS, k on WS
<input type="checkbox"/>	Yo
<input type="checkbox"/>	K2tog
<input type="checkbox"/>	Ssk
<input type="checkbox"/>	No stitch
<input type="checkbox"/>	Kfbf
<input type="checkbox"/>	K3tog



LACY LEAF CHART